

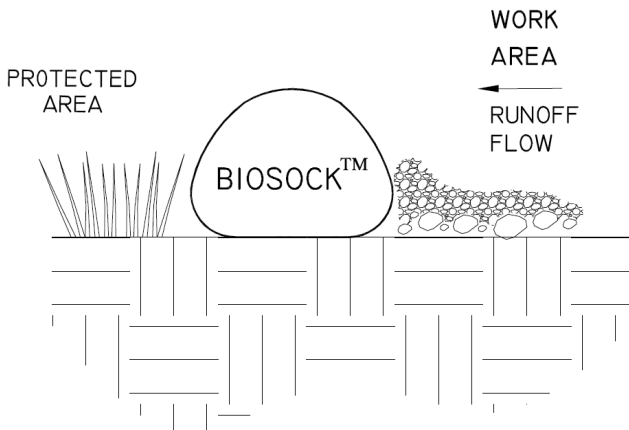


Construction Details for BioSock™ Products

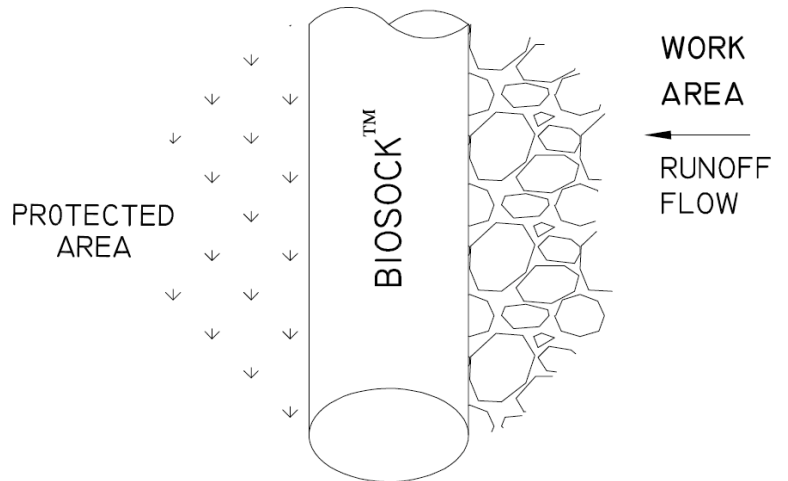
BioSocks Hawaii inc

PERIMETER PROTECTION

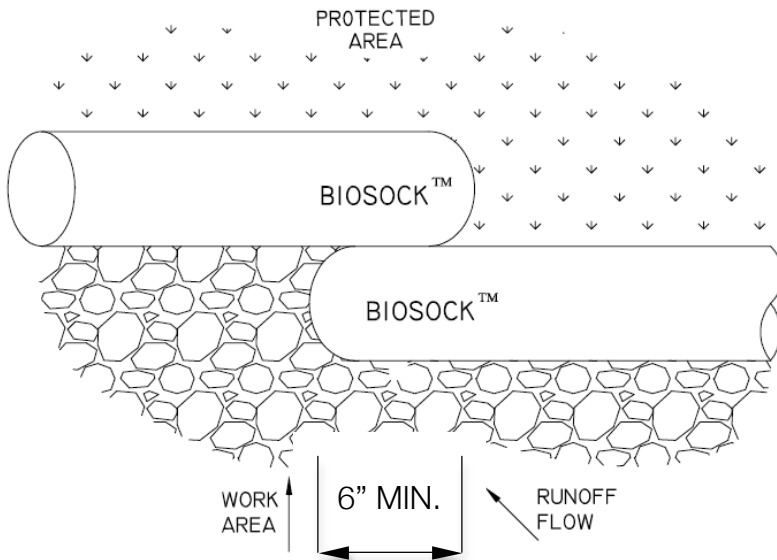
SECTION



PLAN



OVERLAP



Wooden Stake Anchor Spacing

Slope Gradient

- <4:1
- 4:1 to 3:1
- >3:1 to 2:1
- >2:1

Anchor Spacing

- Not Required
- 10' On Center
- 5' to 10' On Center
- 5' On Center

**Wood anchor stakes shall have a nominal classification of 3/4 by 3/4 inch and minimum length of 16 inches. Do not use rebar or other metal rods.*

BioSock Hawaii Inc. 41-530 Waikupanaha Street, Waimanalo, HI 96795

(808) 259-9888 www.biosockshawaii.com